

# Space Weather Paper on SEP data and effect Correlations in September 2017

Piers Jiggins

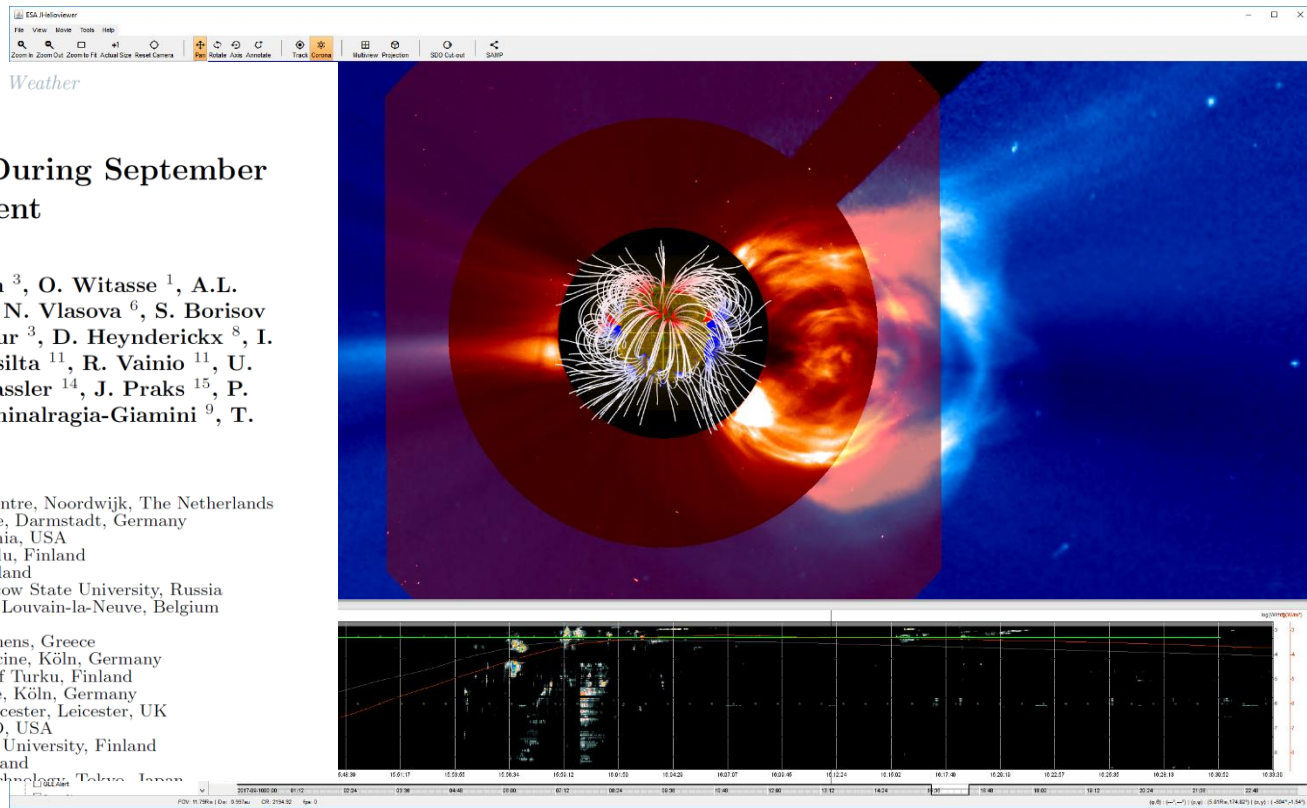
2018 - 11 - 07

Confidential manuscript submitted to *Space Weather*

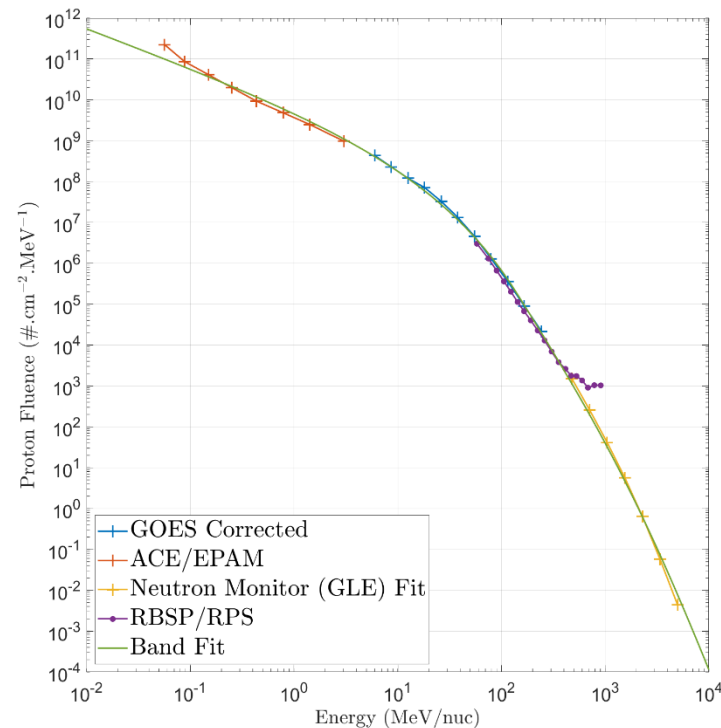
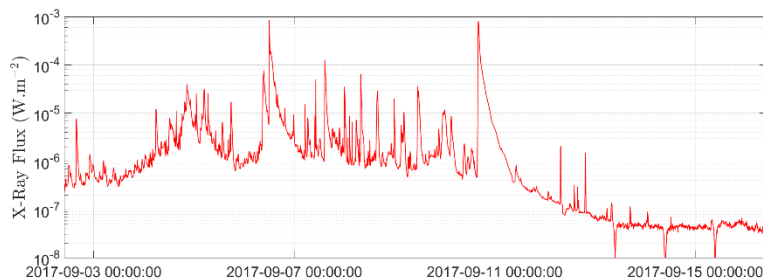
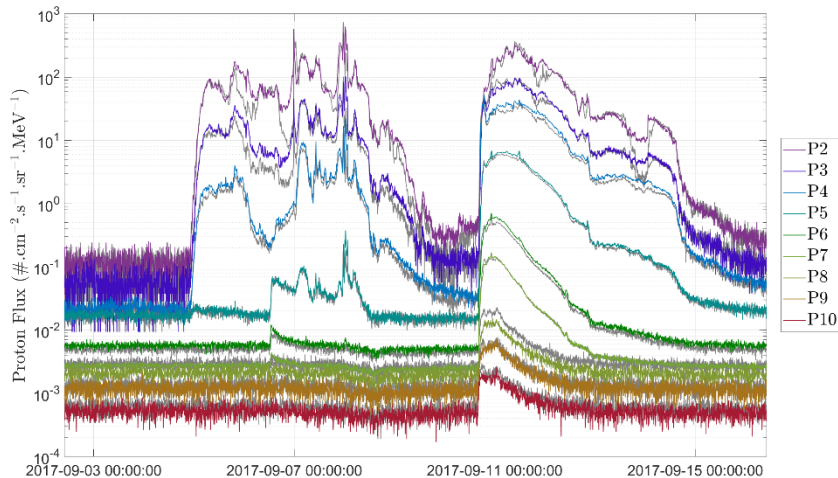
## In-Situ Data and Effect Correlation During September 2017 Solar Particle Event

P. Jiggins<sup>1</sup>, C. Clavie<sup>2</sup>, H. Evans<sup>1</sup>, T.P. O'Brien<sup>3</sup>, O. Witasse<sup>1</sup>, A.L. Mishev<sup>4,5</sup>, P. Nieminen<sup>1</sup>, E. Daly<sup>1</sup>, V. Kalegaev<sup>6</sup>, N. Vlasova<sup>6</sup>, S. Borisov<sup>7</sup>, S. Benck<sup>7</sup>, C. Poivey<sup>1</sup>, M. Cyamukungu<sup>7</sup>, J. Mazur<sup>3</sup>, D. Heynderickx<sup>8</sup>, I. Sandberg<sup>9</sup>, T. Berger<sup>10</sup>, I.G. Usoskin<sup>4,5</sup>, M. Paassilta<sup>11</sup>, R. Vainio<sup>11</sup>, U. Straube<sup>12</sup>, D. Müller<sup>1</sup>, B. Sanchez-Cano<sup>13</sup>, D. Hassler<sup>14</sup>, J. Praks<sup>15</sup>, P. Niemelä<sup>15</sup>, H. Leppinen<sup>16</sup>, A. Punkkinen<sup>11</sup>, S. Aminalragia-Giamini<sup>9</sup>, T. Nagatsuma<sup>17</sup>

- <sup>1</sup>European Space Agency, European Space Research and Technology Centre, Noordwijk, The Netherlands
- <sup>2</sup>European Space Agency, European Space Operations Centre, Darmstadt, Germany
- <sup>3</sup>The Aerospace Corporation, Chantilly, Virginia, USA
- <sup>4</sup>Space Climate Research Unit, University of Oulu, Finland
- <sup>5</sup>Sodankylä Geophysical Observatory, Finland
- <sup>6</sup>Department of Space Science, Institute of Nuclear Physics, Moscow State University, Russia
- <sup>7</sup>Université Catholique de Louvain, Center for Space Radiations, Louvain-la-Neuve, Belgium
- <sup>8</sup>DH Consultancy, Leuven, Belgium
- <sup>9</sup>Space Applications & Research Consultancy, Athens, Greece
- <sup>10</sup>German Aerospace Center, Institute of Aerospace Medicine, Köln, Germany
- <sup>11</sup>Department of Physics and Astronomy, University of Turku, Finland
- <sup>12</sup>European Space Agency, European Astronaut Centre, Köln, Germany
- <sup>13</sup>Department of Physics and Astronomy, University of Leicester, Leicester, UK
- <sup>14</sup>Southwest Research Institute, Boulder, CO, USA
- <sup>15</sup>Department of Electronics and Nanoengineering, Aalto University, Finland
- <sup>16</sup>Space Systems Finland Oy, Espoo, Finland
- <sup>17</sup>National Institute of Information and Communications Technology, Tokyo, Japan

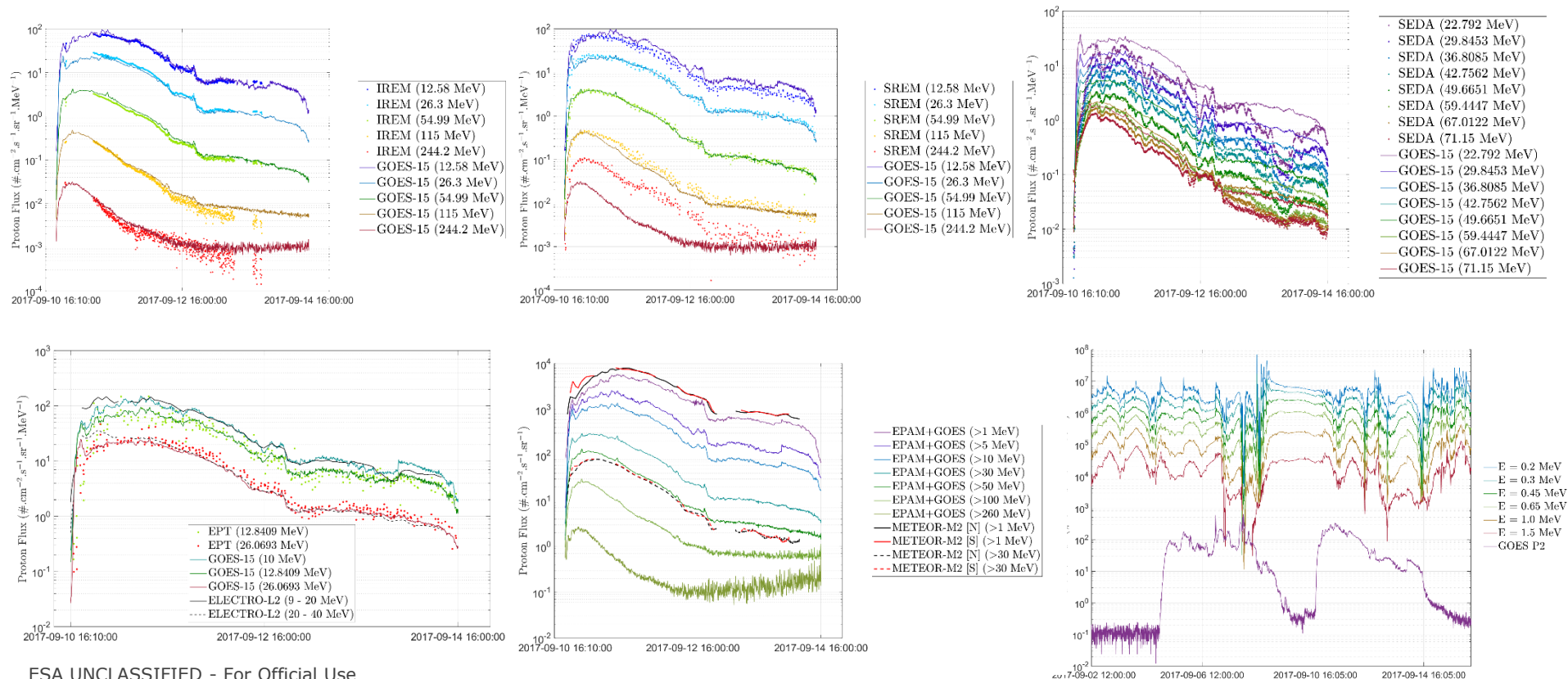


# GOES flux profiles and Derived Fluence Spectrum





# Flux Profile Comparisons (Global data sets)

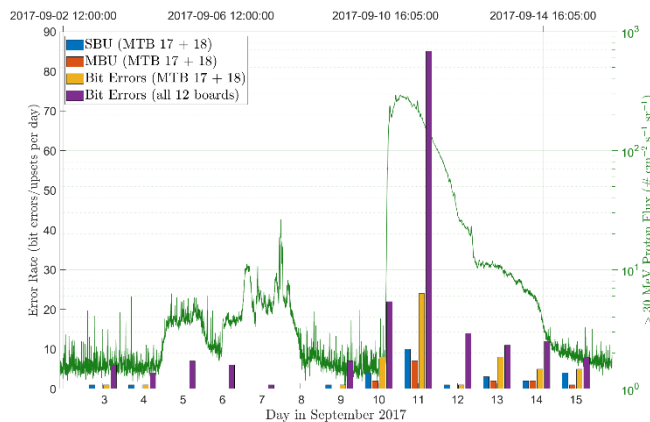
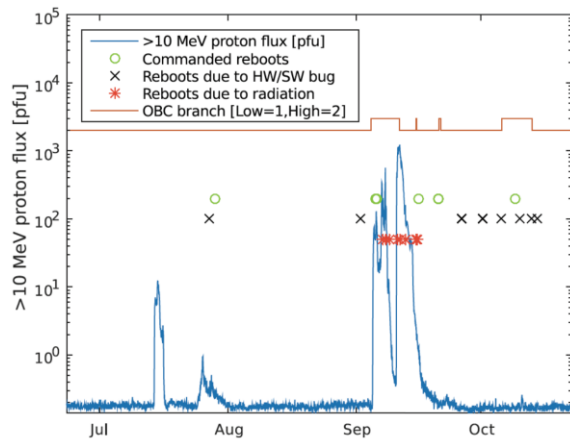
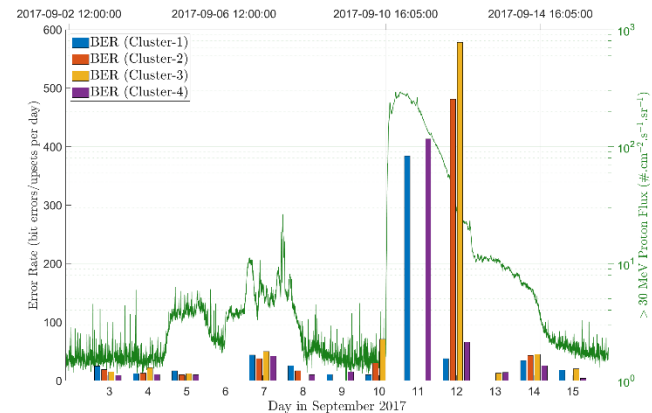
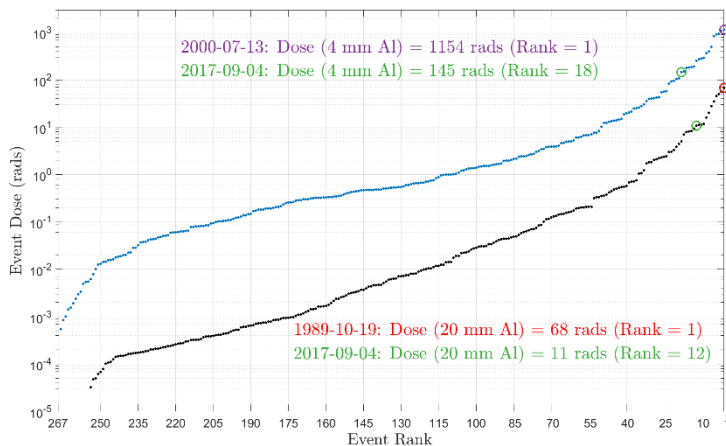


ESA UNCLASSIFIED - For Official Use

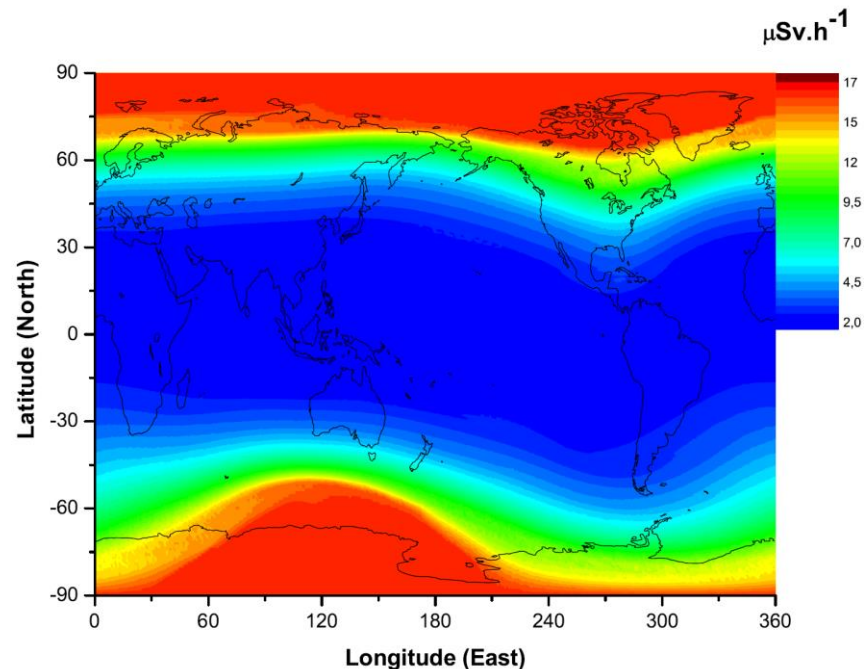
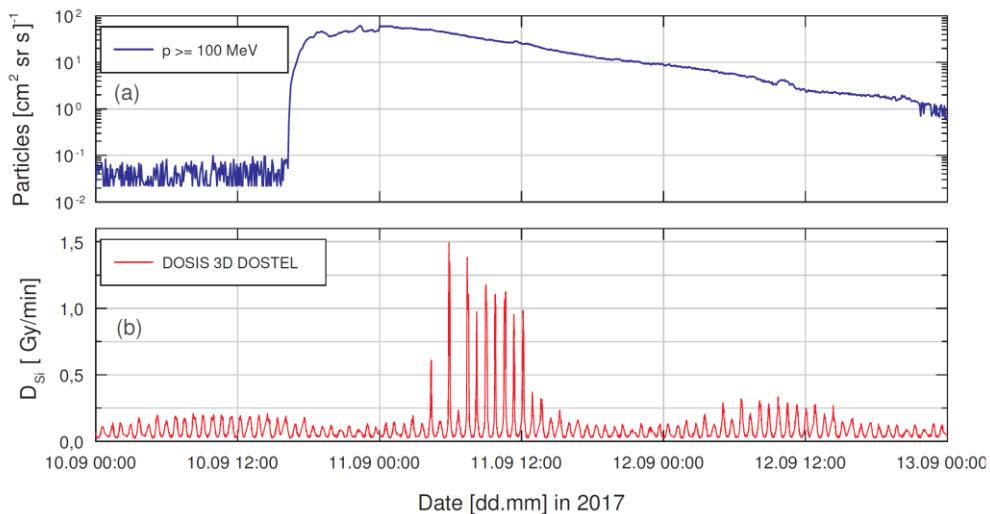


European Space Agency

# Some Effects Quantities



# Dose rates on ISS and at Aircraft Altitudes



# The Event at Mars

